



# SOLDATO UNIT

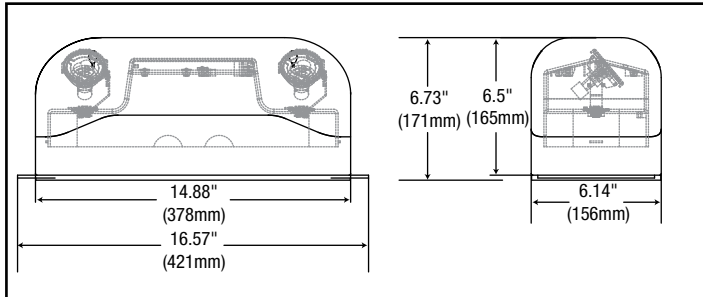
Hazardous Location Battery unit

Project Name: \_\_\_\_\_ Model Number: \_\_\_\_\_  
 Prepared By: \_\_\_\_\_ Date: \_\_\_\_\_

## FEATURES AND BENEFITS

- Hazardous location certified for Class I, Div 2, Groups A, B, C, D, Class II, Div 2, Groups F, G and Class III, Div 2
- Temperature Code T4A
- 120/277/347 VAC 60 Hz Input, field selectable
- Input Power: 30W
- Output: 6 & 12 VDC
- Output Power: 36W, 50W, 72W, 100W and 130W
- Auto-test feature comes standard
- CSA Certified to C22.2 #141-15
- CSA Certified to C22.2 #137
- CSA Certified type 2, 3, 3R, 4, 4X, 5, 12 or 12K
- CSA Certified to NSF 2

## DIMENSIONS



## MODEL RATING GUIDE

MODEL	VOLT (V)	WATTAGE CAPACITIES (W)			
		30MIN	60MIN	90MIN	120MIN
SOL-HZ-U-6-36	6	36	18	12	9
SOL-HZ-U-6-50		50	25	16.5	12.5
SOL-HZ-U-6-72		72	36	24	18
SOL-HZ-U-6-100		100	50	33	25
SOL-HZ-U-6-130		130	65	43	33
SOL-HZ-U-12-36	12	36	18	12	9
SOL-HZ-U-12-50		50	25	16.5	12.5
SOL-HZ-U-12-72		72	36	24	18
SOL-HZ-U-12-100		100	50	33	25
SOL-HZ-U-12-130		130	65	43	33

## ORDERING GUIDE

SOL-HZ-U - - - -

SERIES	OPERATION	WATTS	LAMP	OPTION
SOL-HZ-U	6V 12V	<sup>2</sup> 36W <sup>3</sup> 50W <sup>3</sup> 72W <sup>3</sup> 100W <sup>3</sup> 130W	See lamp selection	AT (Auto-test - Standard) LT (Low temperature -40°C) BB (Black body) WW (White body - Standard)

Standard +10°C to +25°C; **NOTE!**: Available only with 6V36W, 12V36W or 12V72W; **NOTE<sup>2</sup>**: Ni-Cd Battery; **NOTE<sup>3</sup>**: Lead Acid Battery

## ELECTRICAL AND CIRCUITRY

- 120/277/347 VAC 60 Hz Input, field selectable
- High efficiency, rapid recovery, precision control charging system
- Magnetic test switch
- Diagnostic/pilot LED
- Fully automatic, current limited charger
- Temperature compensated charger
- Complete battery recharge in 24 hours
- Standard automatic-testing, self-diagnostic charger board

## MECHANICAL

- Universal spider knockout pattern stamped into backplate for junction box mounting
- Fully gasketed reinforced polycarbonate housing, will not corrode or rust from water exposure
- Stainless steel tamper proof screws and bits
- Black or white finish

## SPACING GUIDE

MOUNTING HEIGHT	SPACING CENTER TO CENTER (FT)			
	4W	5W	6W	7W
8 ft	76	81	94	108
10 ft	79	79	93	106
15 ft	66	62	82	96
20 ft	53	49	73	87

## LUMEN TABLE

WATTS	LUMENS
4W	388
5W	435
6W	507
7W	652

## LAMP SELECTION

	6V	12V
LED-MR16	4W, 5W	4W, 5W, 6W, 7W