



SOLDATO UNIT

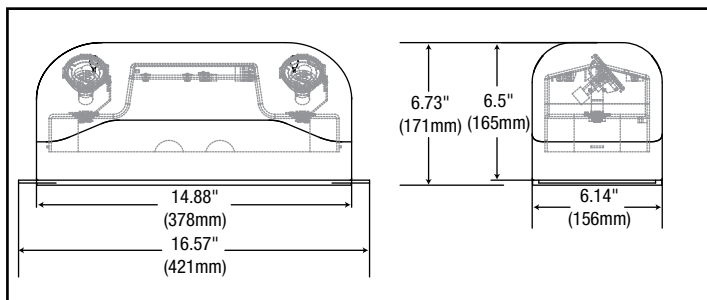
Hazardous Location Battery unit

Project Name: _____ Model Number: _____
 Prepared By: _____ Date: _____

FEATURES AND BENEFITS

- Hazardous location certified for Class I, Div 2, Groups A, B, C, D, Class II, Div 2, Groups F, G and Class III, Div 2
- Temperature Code T4A
- 120/277/347 VAC 60 Hz Input, field selectable
- Input Power: 30W
- Output: 6 & 12 VDC
- Output Power: 36W, 50W, 72W, 100W and 130W
- Auto-test feature comes standard
- CSA Certified to C22.2 #141-15
- CSA Certified to C22.2 #137
- CSA Certified type 2, 3, 3R, 4, 4X, 5, 12 or 12K
- CSA Certified to NSF 2

DIMENSIONS



MODEL RATING GUIDE

MODEL	VOLT (V)	WATTAGE CAPACITIES (W)			
		30MIN	60MIN	90MIN	120MIN
SOL-HZ-U-6-36	6	36	18	12	9
SOL-HZ-U-6-50		50	25	16.5	12.5
SOL-HZ-U-6-72		72	36	24	18
SOL-HZ-U-6-100		100	50	33	25
SOL-HZ-U-6-130		130	65	43	33
SOL-HZ-U-12-36	12	36	18	12	9
SOL-HZ-U-12-50		50	25	16.5	12.5
SOL-HZ-U-12-72		72	36	24	18
SOL-HZ-U-12-100		100	50	33	25
SOL-HZ-U-12-130		130	65	43	33

ORDERING GUIDE

SOL-HZ-U - - - -

SERIES	OPERATION	WATTS	LAMP	OPTION
SOL-HZ-U	6V 12V	² 36W ³ 50W ³ 72W ³ 100W ³ 130W	See lamp selection	AT (Auto-test - Standard) LT (Low temperature -40°C) BB (Black body) WW (White body - Standard)

Standard +10°C to +25°C; **NOTE!**: Available only with 6V36W, 12V36W or 12V72W; **NOTE²**: Ni-Cd Battery; **NOTE³**: Lead Acid Battery

ELECTRICAL AND CIRCUITRY

- 120/277/347 VAC 60 Hz Input, field selectable
- High efficiency, rapid recovery, precision control charging system
- Magnetic test switch
- Diagnostic/pilot LED
- Fully automatic, current limited charger
- Temperature compensated charger
- Complete battery recharge in 24 hours
- Standard automatic-testing, self-diagnostic charger board

MECHANICAL

- Universal spider knockout pattern stamped into backplate for junction box mounting
- Fully gasketed reinforced polycarbonate housing, will not corrode or rust from water exposure
- Stainless steel tamper proof screws and bits
- Black or white finish

SPACING GUIDE

MOUNTING HEIGHT	SPACING CENTER TO CENTER (FT)			
	4W	5W	6W	7W
8 ft	76	81	94	108
10 ft	79	79	93	106
15 ft	66	62	82	96
20 ft	53	49	73	87

LUMEN TABLE

WATTS	LUMENS
4W	388
5W	435
6W	507
7W	652

LAMP SELECTION

	6V	12V
LED-MR16	4W, 5W	4W, 5W, 6W, 7W